

SPORTSMEN

Fifth Wheels

2019 Décor



Cashew

Walnut

Standards

- 5/8" Tongue & Groove Plywood Floor
- New Aerodynamic Front Profile
- Enclosed Pin Box
- 3/8" Fully Walk-On Roof Decking
- 1-Piece Seamless Roof
- Awning w/Drip Rail & Spouts
- Tinted Windows
- Super-Sized Panoramic Slideroom Window
- Radius Entry Door
- Smooth Screwless Baggage Doors
- LED Pass-Through Storage Light
- Cable Hookup
- Digital TV Antenna w/Booster
- Self-Adjusting Electric Brakes
- Radial Tires
- Rear Bumper w/Sewer Hose Storage
- Winter Bypass Kit
- 2 or 4 Stabilizer Jacks (model specific)
- Outside Shower
- (2) 30# Gas Bottles w/Bottle Cover
- 30 AMP Service
- 13,500 BTU A/C
- 3-Burner Cooktop
- Range Hood w/12V Light & Exhaust Fan
- Microwave w/Turntable
- Oven
- Acrylic Sink w/High-Rise Faucet
- Roller Ball Bearing Drawer Guides
- Large Overhead Cabinets
- LED Interior Lighting
- Monitor Panel
- Built-In Medicine Cabinet w/Mirror in Bath

- Shower Surround
- Power Vent in Bath
- Skylight over Shower
- Queen Mattress
- Reversible Quilted Comforter
- Main Bedroom Roof Vent
- Aluminum Wheels

Options

- Polar White Exterior Fiberglass (required)
- 15,000 BTU A/C IPO 13,500 BTU A/C
- 50 AMP Service w/2nd A/C Prep
- 2nd A/C (13,500 BTU)
- 30" Fireplace (N/A 231RK)
- Bedroom LED TV w/Inside/Outside Bracket
- Radiant Technology Package (foil in floor, roof, front, rear)
- F/S Dinette Table & 4 Chairs IPO Dinette
- Tri-Fold HAB Sofa IPO Jackknife
- Theater Seating w/Heat & Massage Features IPO Jackknife (251RL, 262RLK) (required on 303RL, 344BH)
- Electric Rear Stabilizer Jacks
- 10 CU FT 12V Refrigerator IPO 8 CU FT Gas/Electric Refrigerator
- Central Vac System
- MaxxAir Vent Fan LR or Bath (required on 281BHK, 302BHK)
- Trundle Bed IPO Dinette in Bunk Slide (302BHK)
- Wireless Backup Camera System - Observation
- Bumper Mount Grill (N/A 231RK)
- Roof Ladder

KZ Advantage Package (mandatory option)

Exterior

- Flip-Up Entry Steps
- 5/8" T&G Plywood Floor
- Key-Alike for Baggage & Entry Doors
- Friction Hinge Entry Door
- Large Folding Grab Handle
- Power Front Jack
- Spare Tire
- Equa-Flex® Suspension
- Nitrogen Filled Tires
- Flip-Down 71" Storage Rack
- Exterior Speakers
- Battery Disconnect Switch
- Black Tank Flush
- Toylok
- Backup Camera Prep
- Solar Prep
- Climate Package (heated, insulated & enclosed underbelly)

Interior

- Seamless Countertops w/Deep Undermount Stainless Steel Kitchen Sink
- Sink Cover
- Drop-In Cooktop w/Glass Cover & Oven
- Kitchen Skylight
- 36" Storage Bins in Booth Dinette
- Bright White LED Light Strip above Main LR Slide Room(s)
- Jackknife w/Middle Console & Bolster Arms
- 2 Motion Sensor Lights
- LED TV

- Multiple Media Stereo w/DVD/Bluetooth/NFC Wireless Connectivity
- (2) 6.5" Interior Speakers
- 12V Dual USB Port
- Pleated Shades
- Foot Flush Toilet
- Plywood Bed Base
- Upper Bunk Windows (select models)
- Pillowtop Mattress
- Wider Pocket/Passage Interior Doors

KZ Convenience Package (mandatory option)

Exterior

- Power Awning w/LED Light Strip
- 16" Tires w/Aluminum Wheels (N/A 231RK)
- Magnetic Baggage Door Catches
- Omnidirectional HDTV Antenna
- LED Lights in Exterior Speakers

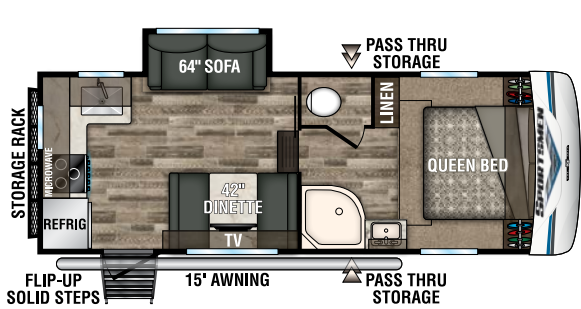
Interior

- Residential Grade Linoleum
- 8 CU FT Gas/Electric Refrigerator
- Stainless Steel Residential Kitchen Faucet w/Pulldown Sprayer
- Surfex® Wood Step in FW Hallway
- Interior Control Switches on OH End Cabinet
- Dark Accent Trim on Corners/Entry Doors
- Electric Outlet in Bunk Area

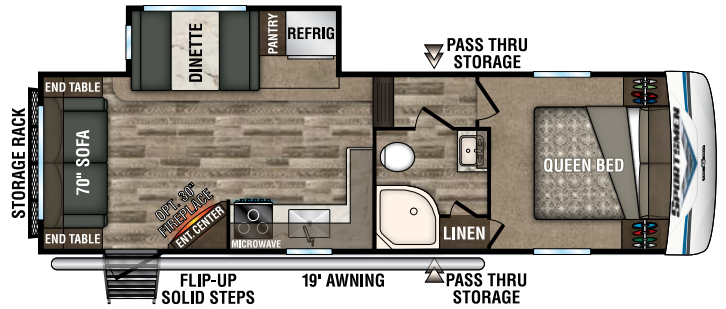
Fifth Wheels	231RK	251RL	262RLK	281BHK	302BHK	303RL	344BH
UVW (Unloaded Vehicle Weight)*	6,100	6,890	8,100	7,730	8,710	8,640	10,150
Dry Hitch Weight*	840	1,195	1,430	1,300	1,210	1,300	1,750
Dry Axle Weight**	5,260	5,700	6,670	6,430	7,500	7,340	8,400
NCC (Net Carrying Capacity)	900	1,610	1,100	1,470	1,290	1,360	1,845
GWR	7,000	8,500	9,200	9,200	10,000	10,000	11,995
Interior Height	75"	75"	75"	75"	75"	75"	75"
Exterior Height w/ A/C	11' 11"	12'	12' 5"	12' 5"	12' 5"	12' 5"	12' 7"
Exterior Width	96"	96"	96"	96"	96"	96"	96"
Exterior Length**	25' 3"	29' 11"	32' 4"	33' 6"	36' 5"	34' 6"	39' 3"
Refrigerator (cu. feet)	8	8	8	8	8	8	8
Water Heater Cap. (gal. G/E w/DSI)	6	6	6	6	6	6	6
Fresh Water Cap. (gal.)	38	38	38	38	38	38	38
Waste Water Cap. (gal.)	53	53	53	32	32	53	53
Gray Water Cap. (gal.)	53	53	85	32	32	53	53
LP Gas Cap. (lbs.)	60	60	60	60	60	60	60
Furnace BTUs (1,000s)	25	25	30	30	30	30	30
Tire Size	15"	16"	16"	16"	16"	16"	16"
Awning	15'	19'	18'	17'	18'	13'/11' opt.	17'/11' opt.

*This weight reflects the rolling average unit weight for each model. Your trailer weight will vary according to optional equipment.

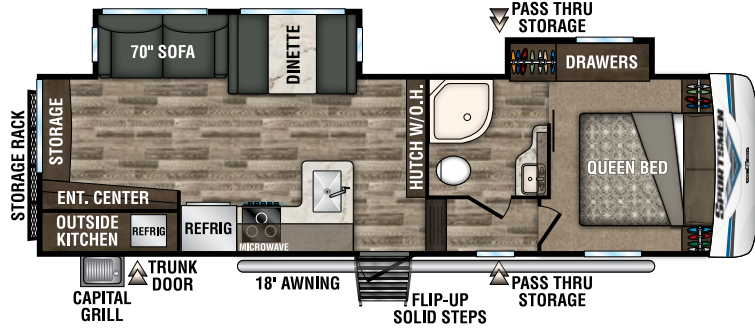
**Exterior length is measured from center of hitch pin to rear bumper.



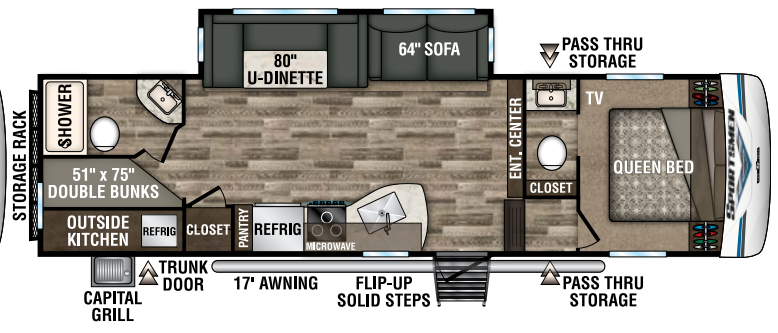
231RK



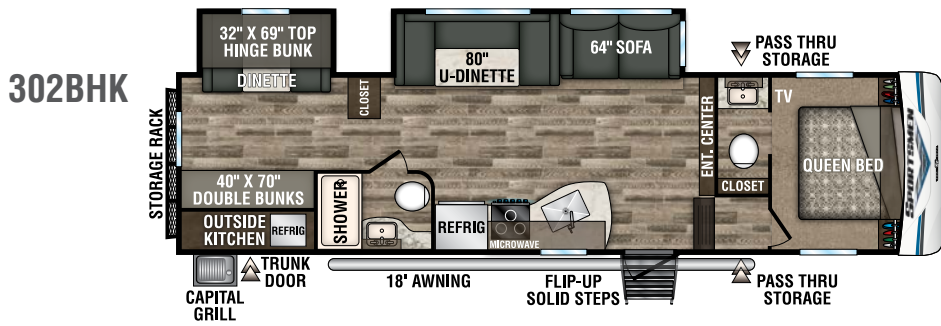
251RL **NEW**



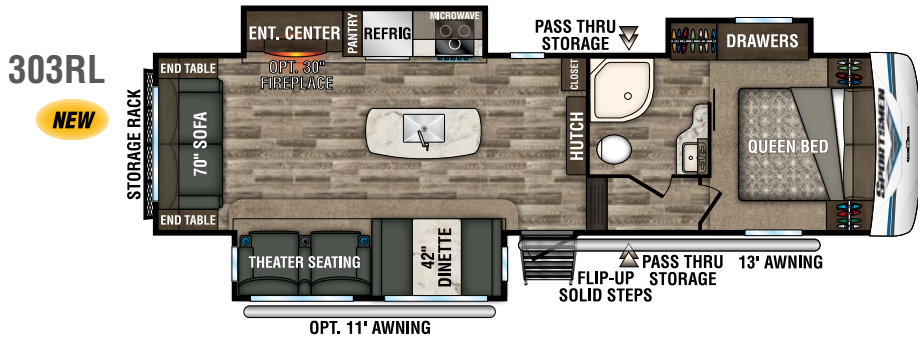
262RLK



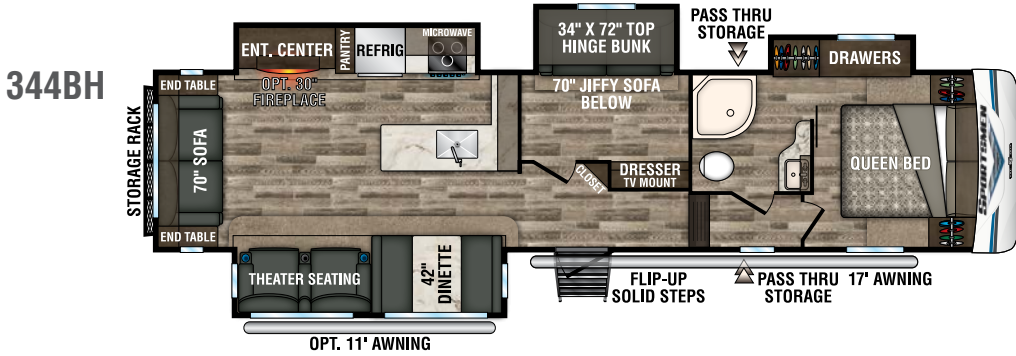
281BHK



302BHK



303RL **NEW**



344BH



985 N 900 W • Shipshewana, IN 46565
 E-mail kz@kz-rv.com • www.kz-rv.com

Due to continual research and advances, manufacturer reserves the right to change specifications, design, price and equipment without notice, and assumes no responsibility for any error in this literature. Some items shown are not included as standard or optional equipment. ©2018KZ | 12/10/18 | 25M