

SPORTSMEN LE

2019 Décor



Walnut

Travel Trailers

Standards

- KZ Exclusive Tough Shield Exterior Metal
- 1-Piece Seamless Roof w/ SuperFlex® Roofing Material
- 3/8" Fully Walk-On Roof Decking
- Radius Truss Roof Rafters
- Awning w/Drip Rail & Spouts
- R-7 Insulation
- Radius Entry Door
- Extra-Large Radius Baggage Doors
- Tinted Windows
- Diamond Plate Rock Guard
- Rear Bumper w/Sewer Hose Storage
- (2) 20# LP Bottles
- 30 AMP Service
- Cable Hookup
- Digital TV Antenna w/Booster
- 13,500 BTU A/C
- Water Heater Bypass Kit
- 3-Burner Cooktop
- Range Hood w/12V Light & Exhaust Fan
- Microwave w/Turntable
- Acrylic Sink w/High-Rise Faucet
- Large Overhead Cabinets
- Roller Ball Bearing Drawer Guides
- LED Interior Lighting
- Linoleum Throughout
- Mini Blinds
- Monitor Panel
- Power Vent in Bath
- Reversible Quilted Comforter

- Built-In Medicine Cabinet w/Mirror in Bath
- Shower Surround

Options

- 15,000 BTU A/C IPO 13,500 BTU A/C
- 50 AMP Service w/2nd A/C Prep
- 2nd A/C (13,500 BTU)
- 30" Fireplace (N/A 231BHK)
- 39" LED TV (N/A 261BHK)
- 32" LED TV (261BHK)
- 24" LED TV (231BHK)
- Bedroom LED TV w/Inside/Outside Bracket (N/A)
- F/S Dinette Table & 4 chairs IPO Dinette
- Wireless Backup Camera System - Observation
- Roof Ladder
- Climate Package (heated, insulated & enclosed underbelly)
- Flip-Down 71" Storage Rack
- Murphy Bed w/Sofa (231BHK)
- 10 CU FT Refrigerator 12V IPO 7 CU FT Gas/Electric Refrigerator
- Sink Cover
- Aluminum Wheels
- 11' Power Awning w/LED light strip (292RL/322BHK)

KZ Advantage Package (mandatory option)

- Exterior**
- New Aerodynamic Front Profile

- Flip-Up Entry Step (main entry)
- Two Toned Exterior Metal
- Friction Hinged Entry Door
- Key-Alike Program for Entry & Baggage Doors
- Large Folding Grab Handle
- Power Tongue Jack
- Exterior Speakers
- Spare Tire & Carrier
- Nitrogen Filled Tires
- 4 Stabilizer Jacks
- LP Bottle Cover
- Backup Camera Prep
- Solar Prep
- Outside Shower
- Outside Kitchen (select models)

Interior

- Jackknife Sofa w/Center Console & Bolster Arms
- Drop-In Cooktop w/Glass Cover & Oven
- 12V Dual USB Port in LR
- Plywood Bed Base
- Upper Bunk Windows (select floorplans)
- Seamless Countertops w/Deep Undermount Stainless Steel Kitchen Sink
- Foot Flush Toilet
- (2) 6.5" Interior Speakers
- Multimedia Stereo w/DVD, Bluetooth & NFC Wireless Connectivity
- Shower Skylight

- Bright White LED Light Strip above Slideout Room (main LR only)
- Dinette Doors w/36" Pullout Storage Bins
- Wider Pocket/Passage Interior Doors
- Pleated Shades in Slideout (LR)

KZ Convenience Package (mandatory option)

Exterior

- Power Awning w/LED Light Strip
- Magnetic Catches for Baggage Doors
- LED Light in Storage Area
- Battery Disconnect Switch
- Omnidirectional HDTV Antenna
- Black Tank Flush
- LED Lights in Exterior Speakers

Interior

- Residential Grade Linoleum
- 7 CU FT Gas/Electric Refrigerator w/Temperature Controls
- Stainless Steel Residential Kitchen Faucet
- Interior Control Switches on Overhead End Cabinet
- Dark Accent Trim on Corners/Entry Doors
- Electric Outlet in Bunk Area

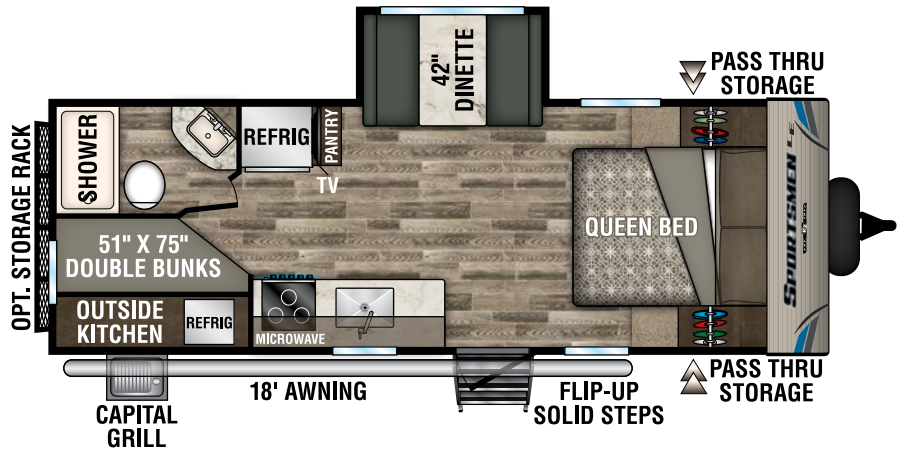
Travel Trailers	231BHKLE	241RKLE	241RLLE	261BHKLE	261RLLE	281BHKLE	291BHLE	291RKLE	292RLLE	322BHKLE	332BHKLE	333BHKLE
UVW (Unloaded Vehicle Weight)*	4,628	5,440	5,230	5,550	5,410	6,280	6,020	6,330	6,610	7,340	7,350	8,140
Dry Hitch Weight*	579	560	620	600	670	720	670	635	810	860	860	850
Dry Axle Weight*	4,049	4,880	4,160	4,950	4,740	5,560	5,350	5,695	5,800	6,480	6,490	7,290
NCC (Net Carrying Capacity)	1,372	1,560	1,770	1,450	1,590	1,720	1,980	1,670	1,390	1,460	1,450	1,855
GVWR	6,000	7,000	7,000	7,000	7,000	8,000	8,000	8,000	8,000	8,800	8,800	9,995
Interior Height	78"	78"	78"	78"	78"	78"	78"	78"	78"	78"	78"	78"
Exterior Height w/ A/C	10' 6"	10' 8"	10' 8"	10' 8"	10' 7"	10' 8"	10' 8"	10' 8"	10' 8"	10' 8"	10' 8"	10' 8"
Exterior Width	96"	96"	96"	96"	96"	96"	96"	96"	96"	96"	96"	96"
Exterior Length	26' 9"	28' 6"	28' 11"	30' 2"	30' 8"	32' 8"	33' 2"	33' 2"	33' 9"	36' 9"	36' 10"	37' 8"
Refrigerator (cu. feet)	7	7	7	7	7	7	7	7	7	7	7	7
Water Heater Cap. (gal. G/E w/DSI)	6	6	6	6	6	6	6	6	6	6	6	6
Fresh Water Cap. (gal.)	38	38	38	38	38	38	38	38	38	38	38	38
Waste Water Cap. (gal.)	32	32	32	32	32	32	32	32	32	32	32	32
Gray Water Cap. (gal.)	32	32	32	32	32	32	32	64	32	32	32	32
LP Gas Cap. (lbs.)	40	40	40	40	40	40	40	40	40	40	40	40
Furnace BTUs (1,000s)	20	30	30	30	30	30	30	30	30	30	30	30
Tire Size	14"	14"	14"	14"	14"	14"	15"	15"	15"	15"	15"	15"
Awning	18'	19'	17'	19'	15'	18'	18'	18'	10' w/11' opt. 10' w/11' opt.	19'	14'	14'

*This weight reflects the rolling average unit weight for each model. Your trailer weight will vary according to optional equipment.

SPORTSMEN LE

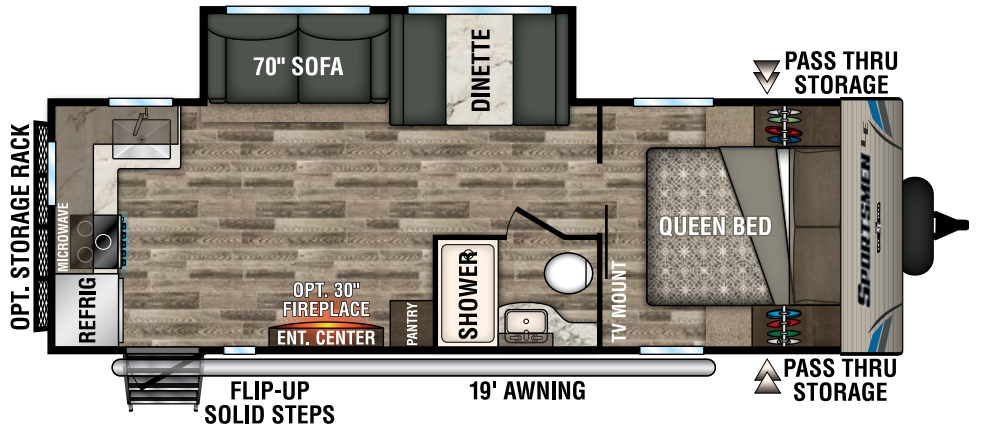
231BHKLE

NEW

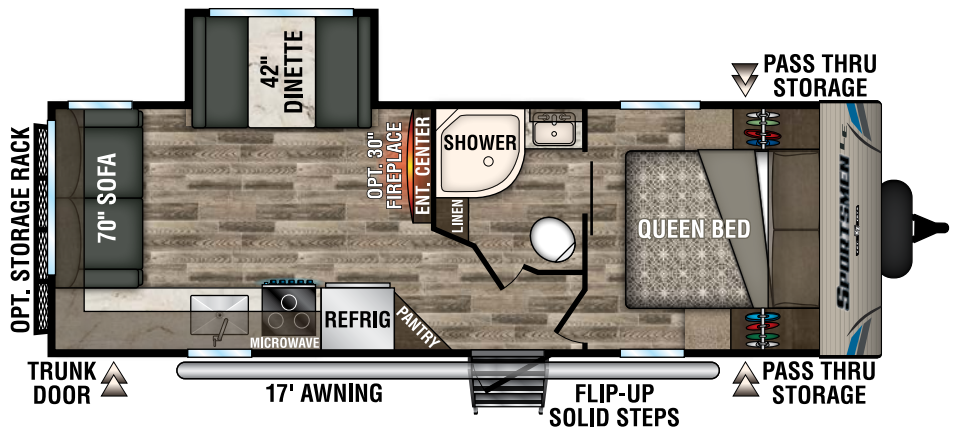


241RKLE

NEW

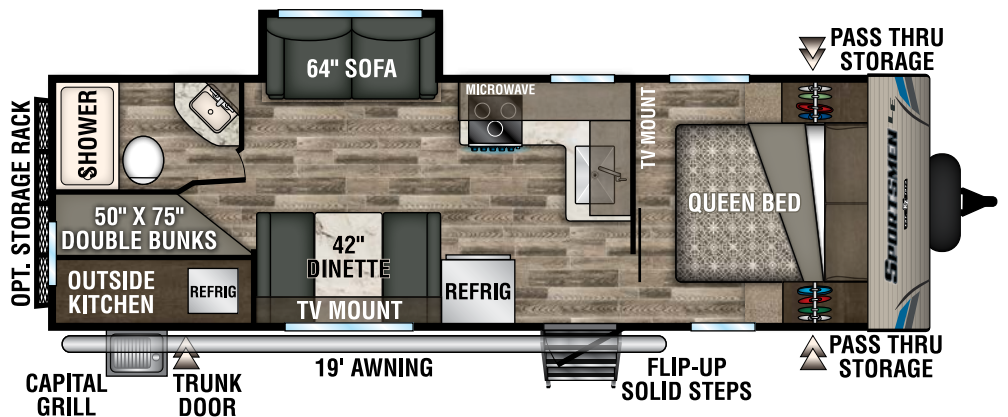


241RLLE

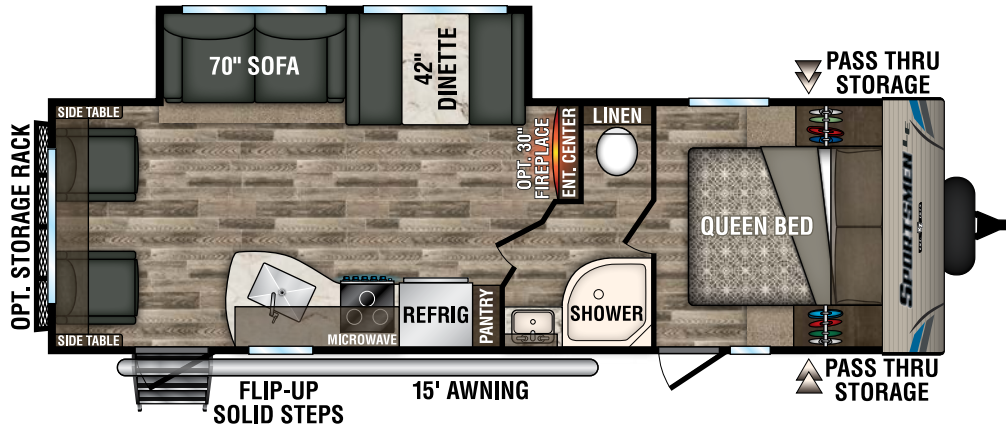


261BHKLE

NEW

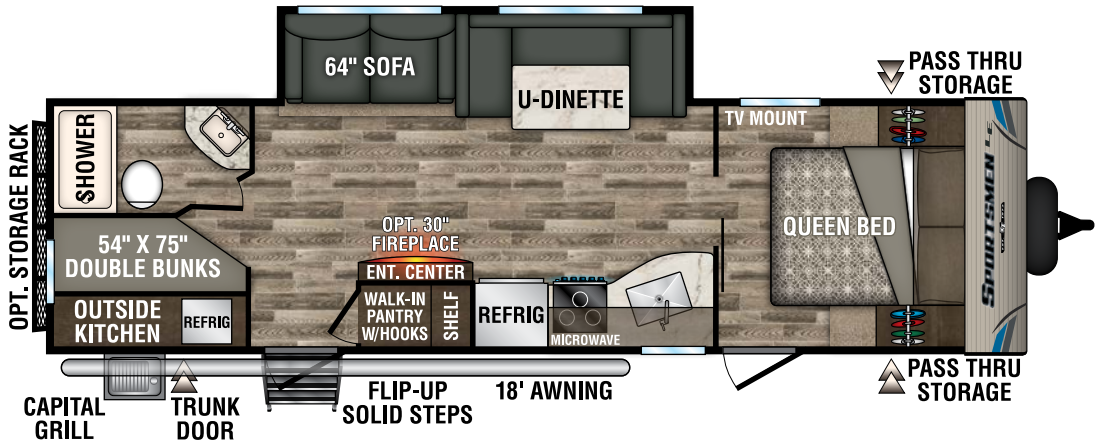


261RLLE

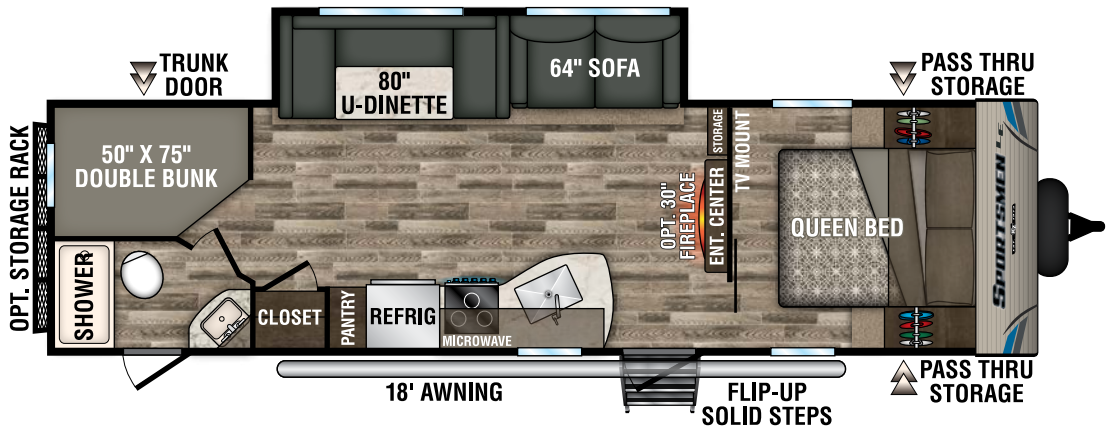


281BHKLE

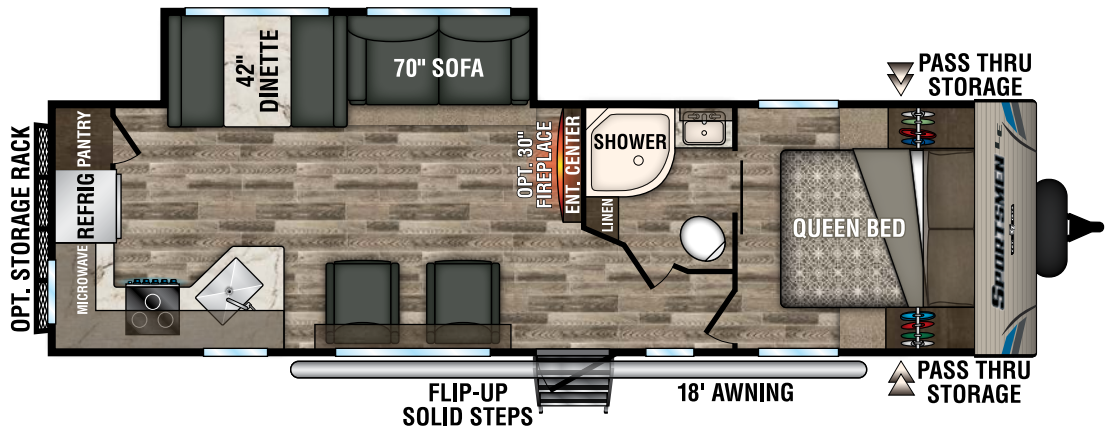
NEW



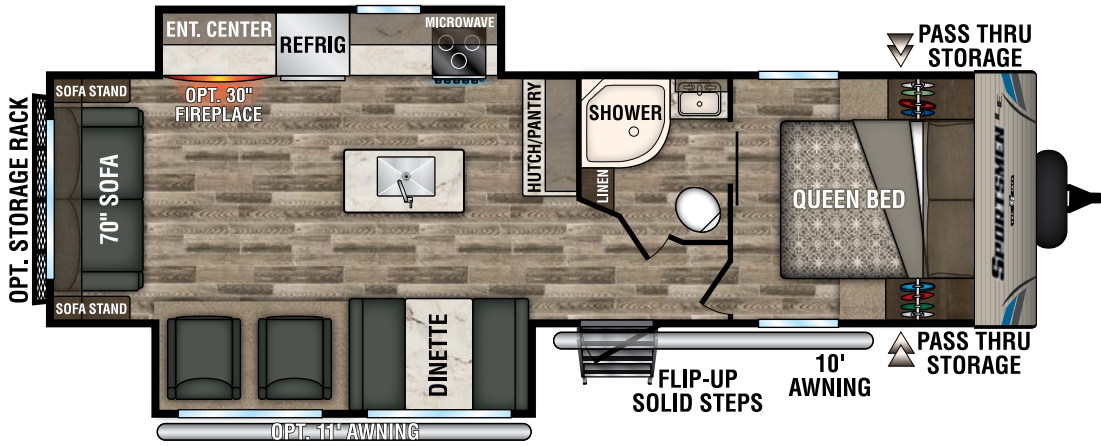
291BHLE



291RKLE

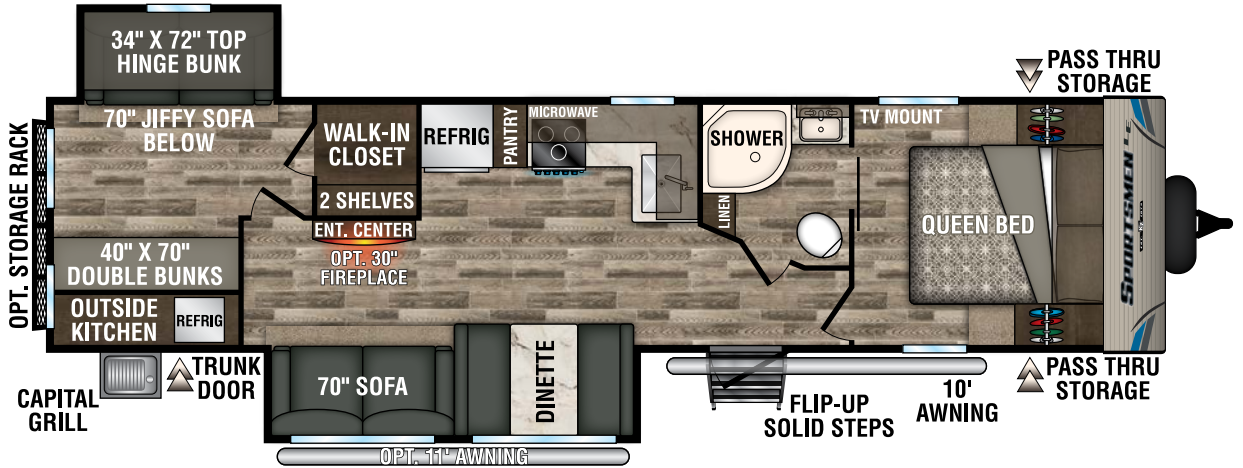


292RLLE



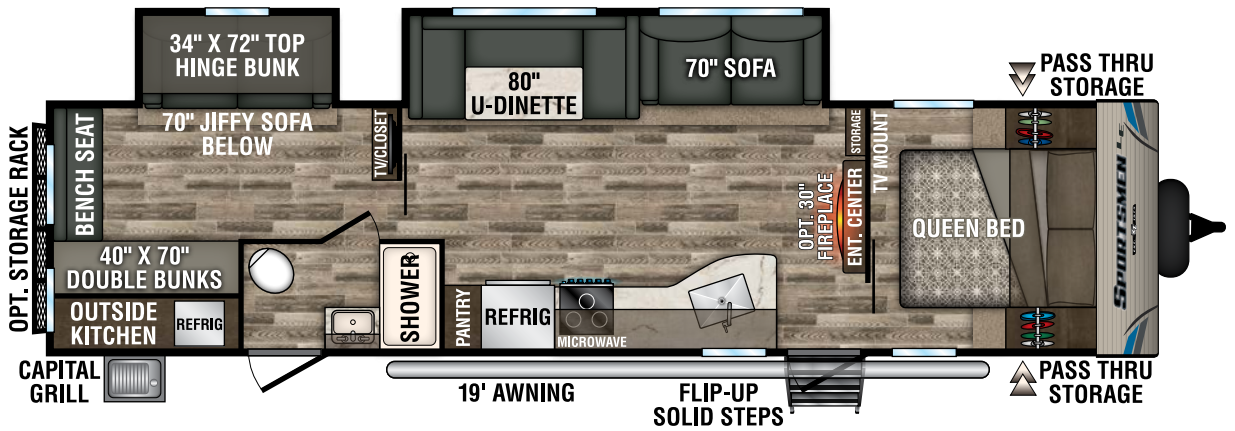
322BHKLE

NEW



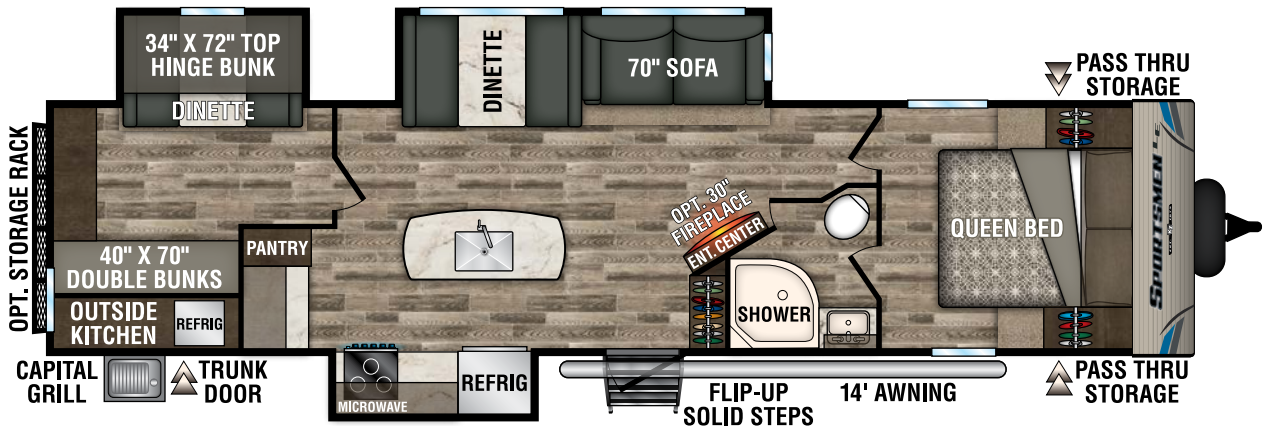
332BHKLE

NEW



333BHKLE

NEW



985 N 900 W • Shipshewana, IN 46565
E-mail kz@kz-rv.com • www.kz-rv.com

Due to continual research and advances, manufacturer reserves the right to change specifications, design, price and equipment without notice, and assumes no responsibility for any error in this literature. Some items shown are not included as standard or optional equipment. ©2018KZ | 12/5/18 | 25M